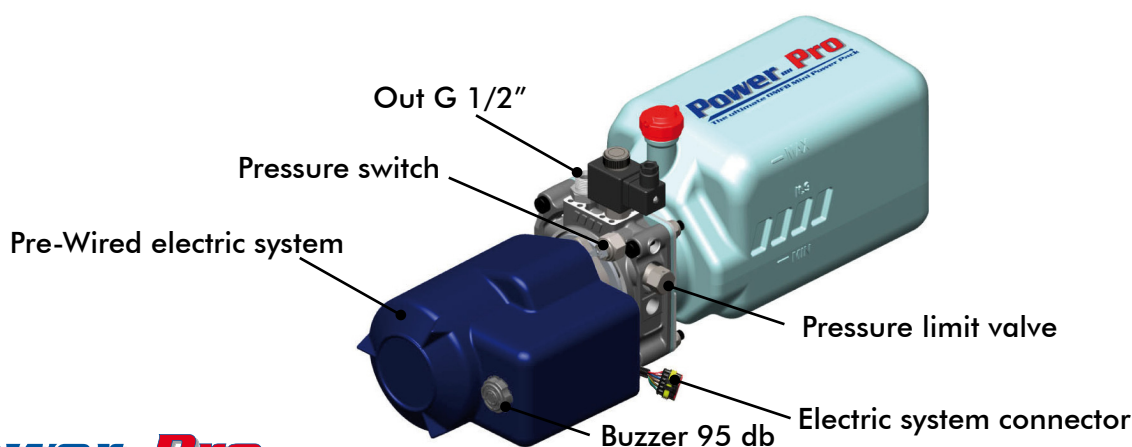


POWER-PACK "CABLED"

Power-Pro Cabl and PK-RE Cabl are hydraulic mini power packs including the complete and pre-wired electric system in the standard version to equip tipping light vehicles.

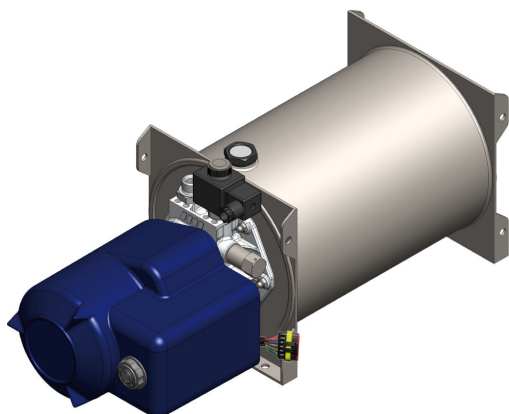
Thanks to this solution the mounting time is significantly reduced and at the same time connection errors decrease. Only power cables and selected control system must be connected.

The system is realized according to the best quality standards in the automotive field with fire-proof coating and Packard IP 65 connections; several lengths are available and can be combined with many control devices to satisfy any requirement.



Power-Pro
The ultimate OMFB Mini Power Pack **"CABLED"**

Tank		Pump	Motor			
Type	Capacity lt	Displacement cm ³ /rev.	12 V - 800 W	24 V - 800 W	12 V - 2000 W	24 V - 3000 W
PLASTIC	5	1	147-943-05102	147-945-05100		
		2	147-943-05200	147-945-05208	147-947-05206	147-949-05204
		3,1			147-947-05313	147-949-05311
	9	1	147-943-09108	147-945-09106		
		2	147-943-09206	147-945-09204	147-947-09202	147-949-09200
		3,1			147-947-09319	147-949-09317



PK-RE "CABLED"

Tank		Pump	Motor	
Type	Capacity lt	Displacement cm ³ /rev.	12 V - 2000 W	24 V - 3000 W
STEEL	S 7	3,1	147-957-07319	
	S 10		147-957-10314	147-959-10312
	S 12		147-957-12312	
	S 15		147-957-15319	147-959-15317

REMOTE SYSTEMS FOR CABLED POWER PACKS

- Electrical system with mobile LIGHT push-button panel (kit for cabin use - IP54).

"Tipper up" warning light activated by specific input

Power ON warning light

Fuse 5A

PACKARD connector (to be connected to the power pack)

Mini-block connector

Holder

- Nos. 2 switches with membrane keyboard.
- Nos.2 controlled relay functions

- Feeding power 12/24V DC
- Max. piloted current outputs 5A

Battery-off switch included

Code	Description
302-001-00562	Short electrical kit (3500mm) cabled PK-RE. Push-button panel LIGHT
302-001-00571	Long electrical kit (5000mm) cabled PK-RE. Push-button panel LIGHT

- Electrical system with mobile ORANGE push-button panel (indoor/outdoor kit - IP55).

Fuse 5A

Mini-block connector

Buzzer 95 db

Holder

PACKARD connector (to be connected to the power pack)

Battery-off switch included

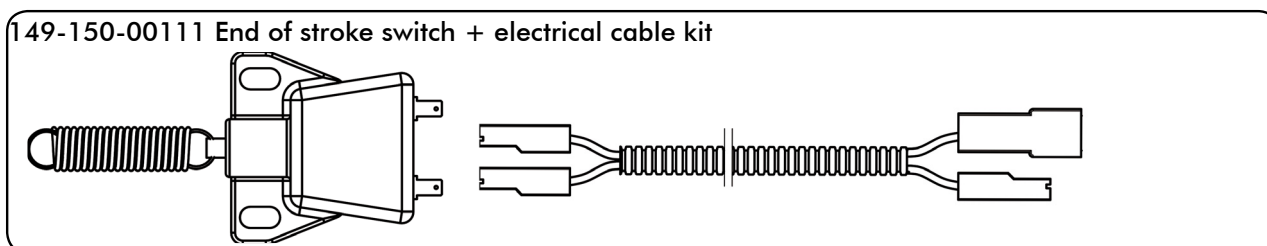
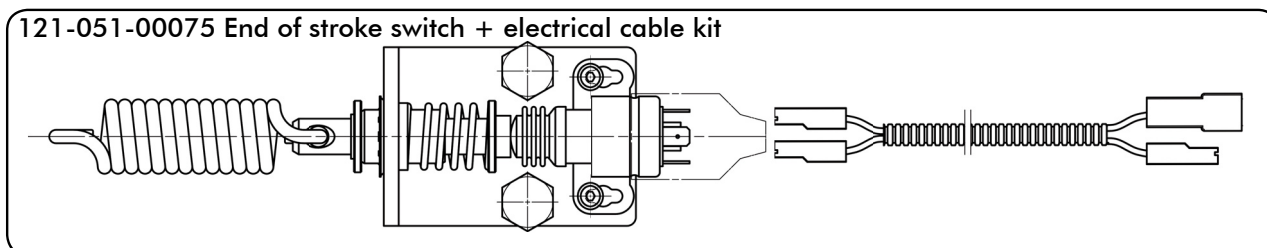
Code	Description
302-001-00508	Short electrical kit (3500mm) cabled PK-RE. Push-button panel ORANGE
302-001-00517	Long electrical kit (5000mm) cabled PK-RE. Push-button panel ORANGE

- Electrical system with button and warning lights inside the driver's cab. **(dashboard kit)**

Tip up power-on light
Orange
 Lift-lower switch
 Inserted tension warning light
Red
 Dashboard bridge
 Battery-off switch included
 Fuse 5A
 Mini-block connector
 PACKARD connector (to be connected to the power pack)

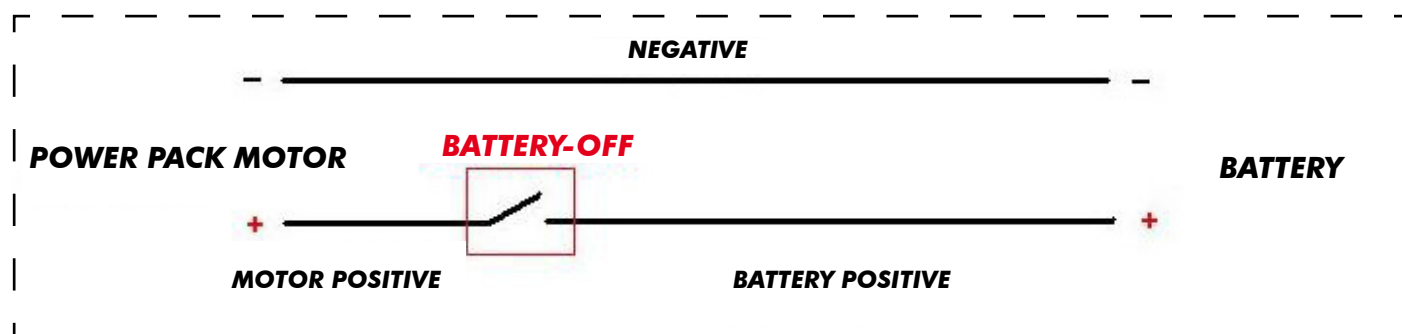
Code	Description
302-001-00526	Short electrical kit (3500mm) 12 V cabled PK-RE. Dashboard
302-001-00535	Long electrical kit (5000mm) 12 V cabled PK-RE. Dashboard
302-001-00544	Short electrical kit (3500mm) 12 V cabled PK-RE. Dashboard
302-001-00553	Long electrical kit (5000mm) 12 V cabled PK-RE. Dashboard

The power pack wiring is predisposed for the use of an end of stroke switch (NC) to be ordered separately:



Power Cables →

POWER CABLES



It is possible:

- to order separately the power cable with protection fuse of 200 A in different lengths as per below reported table:

COMPLETE POWER CABLE KITS			
Negative (-)	Battery positive	Motor positive	Code
1 meter	2 meters	1 meter	302-005-00200
1 meter	3 meters	1 meter	302-005-00308
1 meter	4 meters	1 meter	302-005-00406
1 meter	5 meters	1 meter	302-005-00504

- or to order separately the cable with different lengths and the fuse kits:

NEGATIVE and BATTERY POSITIVE	
Cable length	Code
100 cm	306-011-00116
125 cm	306-011-00125
200 cm	306-011-00204
250 cm	306-011-00259
300 cm	306-011-00302
400 cm	306-011-00400
500 cm	306-011-00508

MOTOR POSITIVE	
Cable length	Code
40 cm	306-011-00044
60 cm	306-011-00071
100 cm	306-011-00107
150 cm	306-011-00160
180 cm	306-011-00188

FUSE KIT	
I (A)	Code
80	306-014-00809
100	306-014-01004
125	306-014-01255
160	306-014-01602
200	306-014-02003
250	306-014-02503